

Sus Surroundings

Music: Pelle Matson

Ukulele

Ukulele

5

I

I

10

I

I

15

I

I

20

I

I

25

I

I

T
A
B

0 0 0 0 2 2 3 3 3 3 5 5

0-0 0-0 0-0 0-0 0-0 0-0 0-0 0-0 0-0 0-0

30

I

I

T
A
B

7 7 3 3 2 2 0 0

7 0 0 7 0 0 2 0 2 0 0 0 0 0 0 0

34

I

I

T
A
B

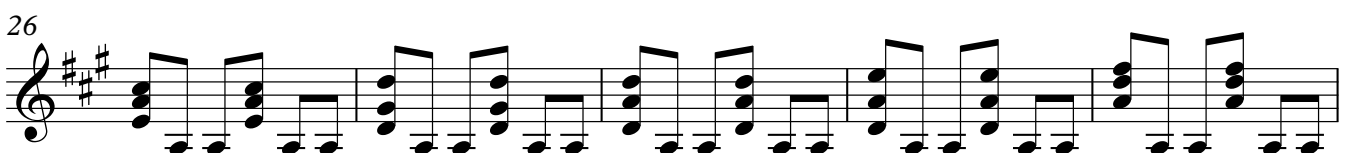
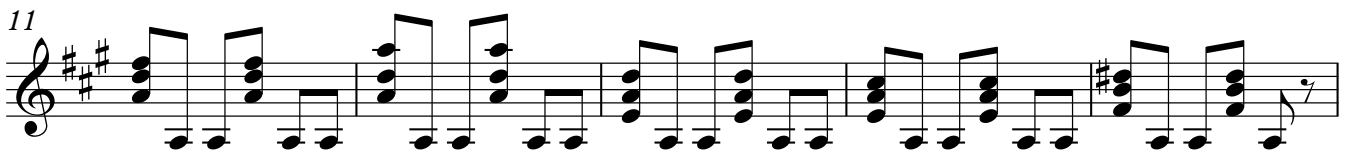
2 2 4 4 3 3 2 2

2 0 0 2 0 0 3 0 3 0 0 0 2 2 2 2

Sus Surroundings

Ukulele

Music: Pelle Matson



Ukulele

Sus Surroundings

Music: Pelle Matson

3/4

Measures 1-5: Treble clef, 3/4 time signature. Fingerings: 4, 4, 3, 3, 2, 2, 2, 2, 3, 3. Rhythmic notation: quarter notes with stems, followed by eighth notes with stems, and finally quarter notes with stems. Bass clef with '0' for open strings.

6

Measures 6-10: Treble clef, 3/4 time signature. Fingerings: 2, 2, 0, 0, 2, 2, 5, 5, 7, 7. Rhythmic notation: quarter notes with stems, followed by eighth notes with stems, and finally quarter notes with stems. Bass clef with '0' for open strings.

11

Measures 11-15: Treble clef, 3/4 time signature. Fingerings: 7, 7, 10, 10, 3, 3, 2, 2, 4, 4. Rhythmic notation: quarter notes with stems, followed by eighth notes with stems, and finally quarter notes with stems. Bass clef with '0' for open strings.

16

Measures 16-20: Treble clef, 3/4 time signature. Fingerings: 3, 3, 2, 2, 2, 2, 3, 3, 3, 3. Rhythmic notation: quarter notes with stems, followed by eighth notes with stems, and finally quarter notes with stems. Bass clef with '0' for open strings.

21

Measures 21-25: Treble clef, 3/4 time signature. Fingerings: 5, 5, 7, 7, 3, 3, 2, 2, 0, 0. Rhythmic notation: quarter notes with stems, followed by eighth notes with stems, and finally quarter notes with stems. Bass clef with '0' for open strings.

26

Measures 26-30: Treble clef, 3/4 time signature. Fingerings: 2, 2, 3, 3, 3, 3, 5, 5, 7, 7. Rhythmic notation: quarter notes with stems, followed by eighth notes with stems, and finally quarter notes with stems. Bass clef with '0' for open strings.

31

Measures 31-33: Treble clef, 3/4 time signature. Fingerings: 3, 3, 2, 2, 0, 0. Rhythmic notation: quarter notes with stems, followed by eighth notes with stems, and finally quarter notes with stems. Bass clef with '0' for open strings.

34

Measures 34-36: Treble clef, 3/4 time signature. Fingerings: 2, 2, 4, 4, 3, 3, 2, 2. Rhythmic notation: quarter notes with stems, followed by eighth notes with stems, and finally quarter notes with stems. Bass clef with '0' for open strings.